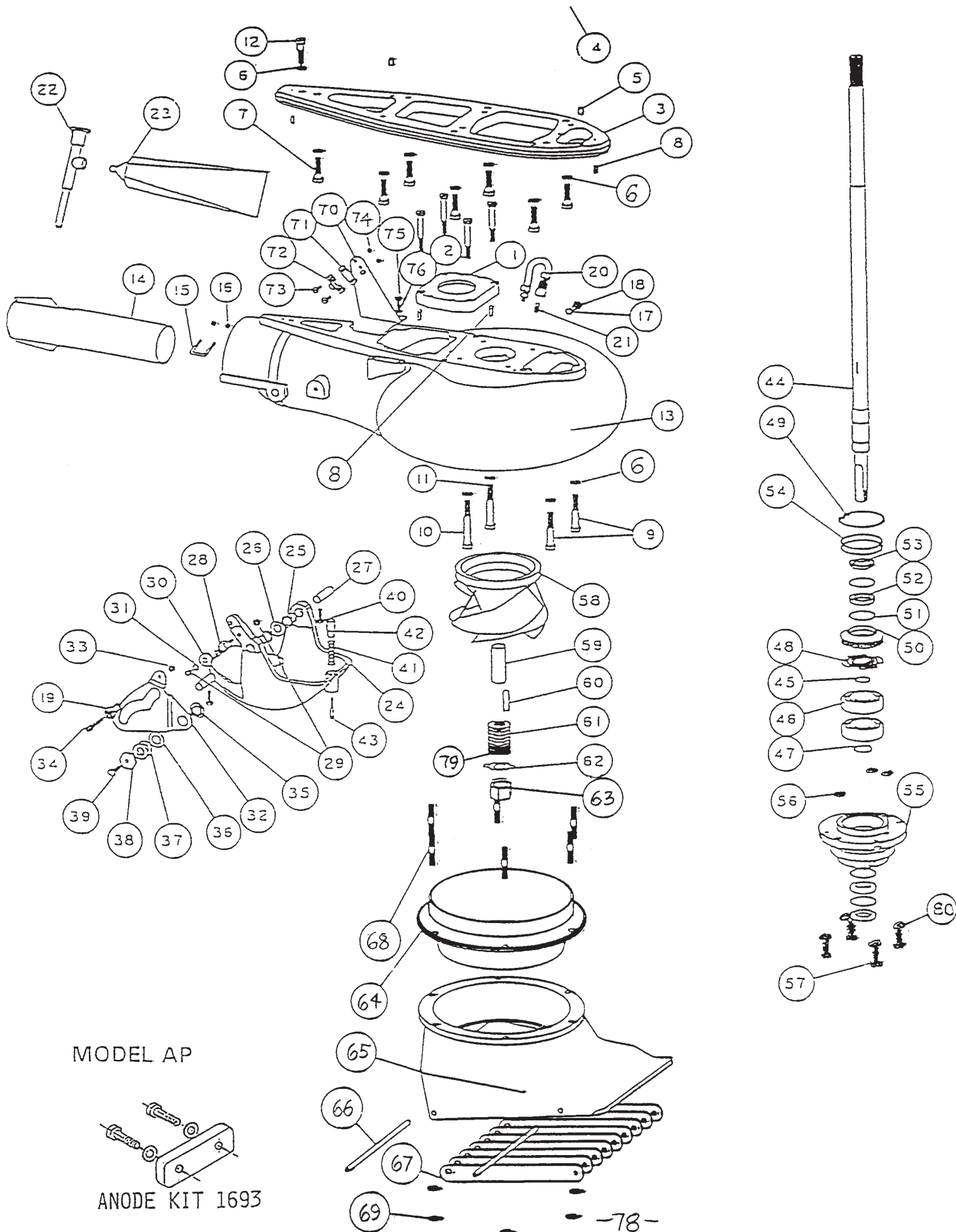
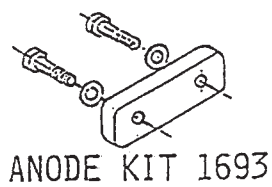


NEUTRAL CABLE ASSY



MODEL AP



## MODEL AP SUZUKI / EVINRUDE 4 STROKE, 60-70 HP

REF NO.	QTY	PART NO.	DESCRIPTION	REF NO.	QTY	PART NO.	DESCRIPTION
1	1	1542	PUMP ADAPTER AP	49	1	513	TRUARC N5002-250ZD
2	4	597.1	BOLT HEX HD 5/16-18 X 1 3/4	50	1	432	UPPER SEAL CARRIER W/SEALS & O RINGS
2	4	603	BOLT HEX HD 5/16-18 X 2 1/2	51	4	517	SPIROLOX RR-150S
3	1	1537	ADAPTER PLATE AP	52	2	506	SEAL INNER
4	1	1318	NEUTRAL CABLE ASSY AP SUZUKI	53	2	507	SEAL OUTER 6324-S
	1	1547	NEUTRAL CABLE ASSY AP EVINRUDE	54	2	527	O RING 568-141 3/32X2 5/16X2 1/2
5	2	615	DOWEL PIN 8 X 12M	55	1	393.5	BEARING CARRIER W/SEALS & O RINGS 5/16
6	12	636	WASHER SPRING LOCK M10	56	3	521	O RING 568-011 1/16X5/16X7/16
7	7	592	BOLT HEX HD M10-1.25 X 35MM	57	4	602.1	BOLT HEX HD 5/16-18 X 1 PATCH
8	2	631	DOWEL PIN 3/16 X 1/2	58	1	106.24	IMPELLER 7 3/16 W/136 SLEEVE
9	2	608	BOLT HEX HD 3/8-16 X 2 1/4	59	1	136	SHAFT SLEEVE PLASTIC LARGE
10	1	609	BOLT HEX HD 3/8-16 X 2 3/4	60	1	1706	IMPELLER TEE KEY - 1/2 ROUND
11	1	610	BOLT HEX HD 3/8-16 X 3	60	1	434	IMPELLER TEE KEY - 1/2 SQUARE
12	1	607	BOLT HEX HD 3/8-16 X 1 1/2	61	7	121	SHIM WASHERS
		1541.02	VOLUTE WITH GATE AP	62	1	781	NUT KEEPER LARGE 2 PER BAG
13	1	1540.02	VOLUTE WITH EXHAUST TUBE AP	63	1	122.1	SHAFT NUT 3/4-16 BRASS
14	1	128	EXHAUST TUBE ASSY LARGE 2 1/2			1840.04	INTAKE ASSY 7 3/16 FLANGED W/GRILL & LINER
15	1	845	CLIP EXHAUST TUBE 1 3/8	64	1	1831	LINER 7 3/16 FLANGED
16	2	621	NYLOC 10-32	65	1	1332.04	INTAKE PAINTED ONLY EX-LARGE
17	1	1023	WASHER FIBER 3/8	66	2	14	GRILL ROD
18	1	1022	BOLT HEX HD 3/8-16 X 1/2	67	9	117	GRILL BAR LARGE
19	2	553.2	BALL END 1/4X10-32 CABLE	68	6	1319	STUD - INTAKE LARGE
20	1	975	LUBE HOSE ASSY	69	6	625	NYLOC 5/16-18
21	1	539	ZIRC FITTING 1/4-28	70	1	1499	BRACKET CABLE SUPPORT AP-E
22	1	550	GREASE GUN		1	546	CLIP OMC 305736 - EVINRUDE
23	1	552	GREASE 10 OZ TUBE NO. 630-AA		2	562	PAN HD PHILLIPS 10-32 X 1/2 - EVINRUDE
24	1	1172	REVERSE GATE LARGE		3	621	NYLOC 10-32 - EVINRUDE
25	2	536	NYLINER 1/2 ID X 13/16		1	562.1	PAN HD PHILLIPS 10-32 X 5/8 - EVINRUDE
26	1	1178	SPRING GATE PIVOT 1/2		1	542	SHIM MORSE A035777 - EVINRUDE
27	2	823	PIN GATE PIVOT 1/2 LARGE		1	543	CLAMP CHRYS 154317 - EVINRUDE
28	1	1043	SHAFT ROLLER	70	1	156	BRACKET CABLE SUPPORT AP-S
29	2	624	NYLOC 1/4-28	71	2	542	SHIM MORSE A035777 - SUZUKI
30	1	1042	ROLLER ASSY	72	2	543	CLAMP CHRYS 154317 - SUZUKI
31	3	635	1/4 WASHER AN960C416	73	2	561.1	FL HD SLOTTED 10-24 X 3/4 - SUZUKI
32	1	1034	SHIFT CAM LARGE	74	2	619	NYLOC 10-24 - SUZUKI
33	1	623	NYLOC 1/4-20	75	2	572	BOLT HEX HD 1/4-20 X 5/8
34	1	576	BOLT HEX HD 1/4-20 X 1	76	2	635	1/4 WASHER AN960C416
35	1	1037	BUSHING CAM	79	1	1719	TORSIONAL DAMPER 3/4
36	1	1038	WASHER CAM				
37	2	1039	SHIM - CAM				
38	1	1036	CAM ECCENTRIC DRILLED				
39	1	574.1	BOLT HEX HD 1/4-20 X 1 PATCH				
40	2	574	BOLT HEX HD 1/4-20 X 3/4 PATCH				
41	1	1170	SPRING GATE BUMPER				
42	1	1497	GATE BUMPER				
43	1	559.2	FIL HD SLOTTED 10-32 X 1 1/4 PATCH				
44	1	1545	SHAFT ONLY, AP, 20T 29 7/16 LONG				
		1546.1	SHAFT ASSY COMPLETE, AP, 20T 5/16				
45	1	41	SHAFT BEARING THRUST RING				
46	2	502	BEARING 7305B-UA				
47	1	511	TRUARC 5100-98				
48	1	404	BACKUP WASHER				

TILLER STEERING CABLE 1717 SEE PAGE 26.3

BEARING, SEAL, SNAP & "O" RING KIT  
2 BRG 462.2

NEUTRAL CABLE NEEDED FOR REMOTE CONTROL  
SUZUKI 1318 SEE PG. 25

JOHNSON / EVINRUDE 1547 SEE PG. 26

SIZE	TORQUE
1/4-20 (M6)	8-9 FT-LBS
5/16-18 (M8)	12 FT-LBS
3/8-16 (M10)	22 FT-LBS